



OCTAVE 9:

RAISBECK MUSIC CENTER

Octave 9: Raisbeck Music Center redefines how you experience music, art, learning and events. Through state-of-the-art technology and design, Octave 9 creates an immersive yet flexible environment for truly unique event experiences in the heart of downtown Seattle. As an open concept, flexible event space, Octave 9 is perfect for business meetings/presentations, banquets or receptions, media announcements, video previews and intimate musical performances.



OCTAVE 9: RAISBECK MUSIC CENTER

CAPACITIES: Seated meal, up to 96 (twelve 60" rounds w/ 8 chairs each – no curved screens deployed)
 Standing reception, up to 150
 Theater-style seating, up to 120 (no curved screens)
 Theater-style seating, 80 to 90 (with curved screens deployed)
 Cabaret Tables + Theater-style mixed: up to 80

FEATURES: Designed to change and enhance the acoustical architecture of the space, Octave 9 features the incredible **Meyer Sound Constellation Sound System**. A built-in selection of acoustical pre-sets allows a spoken word or musical performance to sound as if it is taking place either in a small, intimate room or a large, luxurious concert hall.

Octave 9 is also equipped with a total of 13 curved projection screens that can be deployed around a circular track in the ceiling. There are 10 ultra-short throw HD projectors installed in the ceiling that provide visual content to the curved screens. The use of the curved screens and ultra-short throw projectors allow for immersive concert or event experiences to take place in an intimate environment.

COST FACTORS:

1. Facility Use Fee (rental fee)* — varies based on event type & includes items noted below; please refer to current rate sheets
2. Production Equipment — equipment not included in the Facility Use Fee such as the curved projection screens and ultra-short throw HD projectors
3. Labor — stage crew (technical staff), facilities (custodial/cleaning), and front-of-house staff (ushers).

*Included in the facility use fee (rental fee) is the use of furniture owned by Benaroya Hall, such as: 60" banquet rounds, 6' tables, 8' tables, 30" round cocktail tables and up to 120 customized Octave 9 chairs. Also included in the facility use fee (rental fee) is the use of the built-in Meyer Sound Constellation Sound System (pre-set options), built-in LED lighting that can easily be adjusted for color and room ambiance, and a large built-in LCD video wall to easily display video or presentation content.

Facility users are also responsible for labor costs, which could consist of union stage crew, security/ushers, box office staff and custodial/cleaning. Labor is calculated based on an event timeline, and a detailed understanding of event production requirements.

TICKETING: All ticketed events will be run exclusively through Benaroya Hall's Box Office and sold through the Benaroya Hall ticketing system.

CATERING / CONCESSIONS: Provided exclusively through Tuxedos and Tennis Shoes Catering. No outside food or beverage is allowed. Tuxedos and Tennis Shoes Catering helps coordinate linens, napkins, china, glassware, etc.

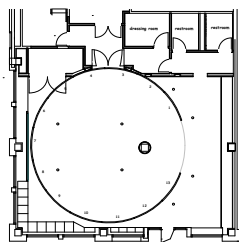
DRESSING ROOMS: Four private dressing rooms with sink & lighted mirror, one musician's lounge that can accommodate up to 30 people, two unisex restrooms + two additional locker rooms with restrooms in backstage area.

DISABLED ACCESS: Benaroya Hall is barrier free and meets or exceeds all criteria established by the ADA (Americans with Disabilities Act).

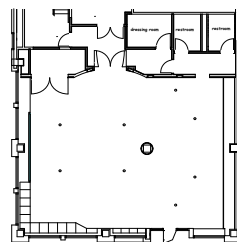
OTHER: In some cases, Benaroya Hall may have all of the necessary production equipment required to successfully produce your event. If your event requires production equipment that is not owned by Benaroya Hall, then you are responsible for outsourcing that production equipment. Examples of production equipment NOT owned by Benaroya Hall include specific AV gear and backline gear such as drum kits, guitar amps, keyboards and instruments.

Parking is available in the Benaroya Hall parking garage. Prepaid parking vouchers may be arranged through your event service representative.

CONTACT: To discuss your event in more detail and learn about date availability, please contact:
Sam Santillan | p. 206.215.4813 | e. sam.santillan@benaroyahall.org



Curved immersive screens



Without curved screens